



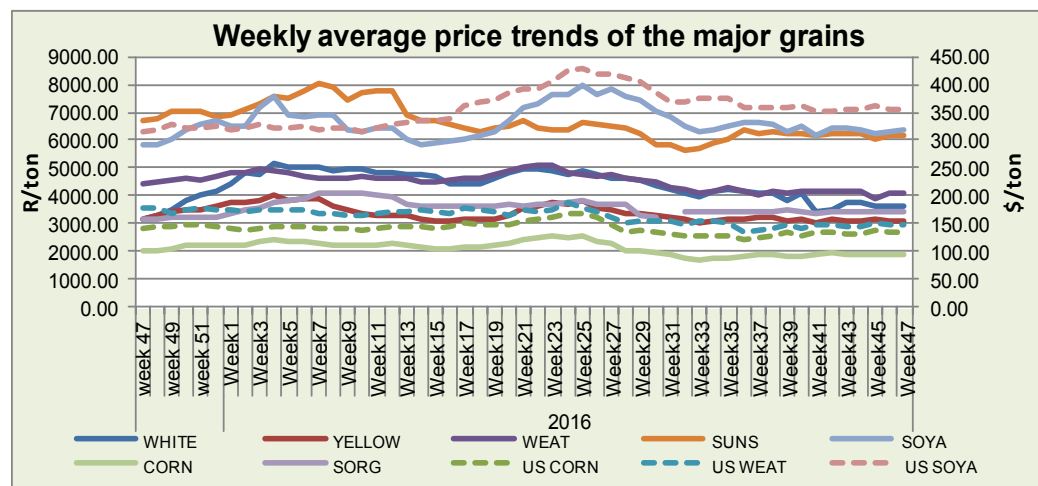
# agriculture, forestry & fisheries

Department:  
Agriculture, Forestry and Fisheries  
REPUBLIC OF SOUTH AFRICA

## Weekly Price Watch: 21 November 2016

Directorate: Statistics & Economic Analysis

Sub-directorate: Economic Analysis



The local price of white maize, yellow maize, wheat, sunflower, sorghum and soybean increased respectively by 7.0%, 2.2%, 1.3%, 0.1%, 2.2% and 4.7% due to the countrywide drought and continued rand weakness. Meanwhile the US Maize prices, wheat, soybeans, decreased respectively by 2.0%, 3.3%, 0.6% during the week due to the projected increase in global output and ample global stocks in the markets.

### Spot price trends of major grains commodities

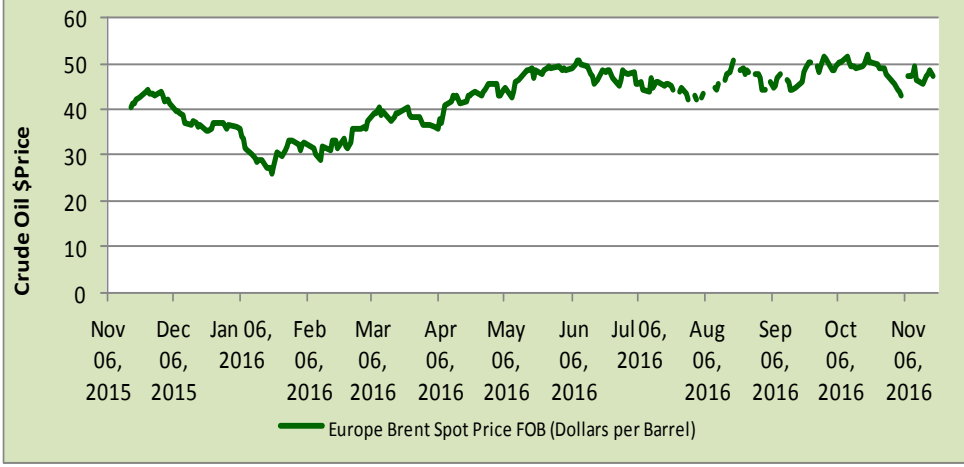
	1 year ago Week 47 (16-11-15 to 20-11-15)	Last week Week 46 (07-10-16 to 11-11-16)	This week Week 47 (14-11-16 to 18-11-16)	w-o-w % change
RSA White Maize per ton	R 3 155.60	R 3 593.00	R 3 843.00	7.0%
RSA Yellow Maize per ton	R 3 143.60	R 3 132.40	R 3 201.20	2.2%
USA Yellow Maize per ton	\$ 142.20	\$ 136.45	\$ 133.79	-2.0%
RSA Wheat per ton	R 4 448.20	R 3 927.60	R 3 979.40	1.3%
USA Wheat per ton	\$ 179.57	\$ 150.69	\$ 145.68	-3.3%
RSA Soybeans per ton	R 5 840.60	R 6 237.00	R 6 532.00	4.7%
USA Soybeans per ton	\$ 315.87	\$ 363.26	\$ 361.10	-0.6%
RSA Sunflower seed per ton	R 6 684.60	R 6 063.40	R 6 066.40	0.1%
RSA Sorghum per ton	R 3 164.00	R 3 438.00	R 3 514.00	2.2%
Crude oil per barrel	\$ 41.54	\$ 47.64	\$ 47.43	-0.4%

### Exchange Rate Movements



The rand has depreciated by 5.1% against the dollar, 2.3% against the Euro and 5.2% against the pound as investors opting to head in the previous weekend on neutral ground ahead of this week's domestic rates decision and a credit rating review from Moody's.

### Brent Crude Oil



Oil prices are slightly higher on expectation that President Trump proposed plan of tax cuts and policy changes that could result in solid equity market.



## National South African Price information (RMAA) : Beef

Week 45 (07/11/2016 to 11/11/2016)	Units	Avg Purchase Price	Avg Selling Price	Week 46 (14/11/2016 to 18/11/2016)	Units	Avg Purchase Price	Avg Selling Price
<b>Cattle</b>							
Class A2	12 679	37.74	35.03	Class A2	11872	37.55	37.05
Class A3	1 588	37.62	36.95	Class A3	1485	37.55	37.01
Class C2	1 623	32.88	33.19	Class C2	1294	33.13	33.22

Beef unit sales for Class A2; A3 and C2 decreased by 6.4%; 6.5% and 20.3% this week compared to last week. The average purchase price for class C2 increased by 0.8%, whilst class A2 and A3 declined by 0.5% and 0.2% respectively. The selling price for class A2; A3 and C2 increased respectively by 5.8%; 0.2% and 0.1% as compared to the previous week average selling price.

## National South African Price information (RMAA) : Lamb

Week 45 (07/11/2016 to 11/11/2016)	Units	Avg Purchase Price	Avg Selling Price	Week 46 (14/11/2016 to 18/11/2016)	Units	Avg Purchase Price	Avg Selling Price
<b>Lamb</b>							
Class A2	13 893	60.74	60.93	Class A2	11361	60.78	60.63
Class A3	2 985	61.11	60.98	Class A3	2536	61.07	60.95
Class C2	857	46.00	48.83	Class C2	1269	46.60	47.31

Lamb unit sales for class A2 , A3 and C2 decreased by 18.2% and 15%, while units sales for class C2 increased by 48.1% compared to last week. Purchase prices for class A2 and C2 increased marginally by 0.1% and 1.3%, meanwhile class A3 declined by 0.1%. The average selling prices for class A2; A3 and C2 decreased by 0.5%; 0.05% and 3.1% respectively.

## National South African Price information (RMAA) : Pork

Week 45 (07/11/2016 to 11/11/2016)	Units	Avg Purchase Price	Week 46 (14/11/2016 to 18/11/2016)	Units	Avg Purchase Price
<b>Pork</b>					
Class BP	6 595	25.88	Class BP	7230	25.70
Class HO	4 619	25.01	Class HO	2680	25.46
Class HP	4 460	25.03	Class HP	2862	25.32

The unit sales for pork class BP increased by 10%, while class HO and HP decreased by 42% and 36% respectively. The average purchase price for class HO and HP increased by 1.8%; 1.2%, whilst class BP declined by 0.7% as compared to last week.

## Latest News Developments

The strengthening of the South African Rand relative to the previous month has played a positive role in the drop of the fuel price, fuel price is expected to decrease in December 2016. The proposed national minimum wage of R3500 per month was presented to the National Economic Development and Labour Council (Nedlac) by a panel of advisors appointed to advise Nedlac on the level at which the country's national minimum wage should be set.

For more information contact: Directorate Statistics & Economic Analysis (SEA) at HeidiP@daff.gov.za or 0123198194.